

Lake Lure

STRONG

Supplemental
Narrative

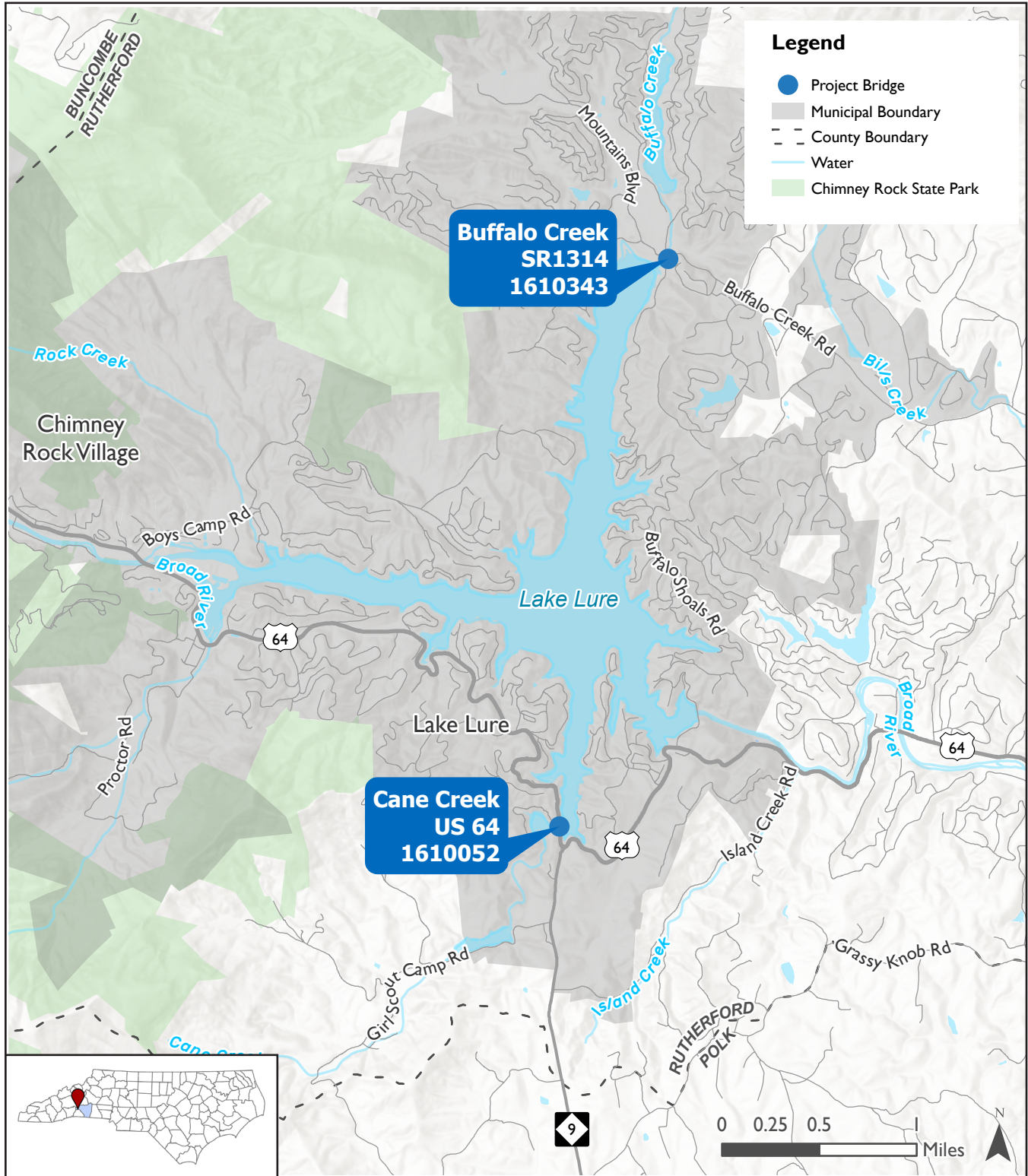
**FY 2026 Bridge Investment Program
(BIP) Planning and Bridge Projects**

GRANT APPLICATION
JUNE 2026



Basic Project Information

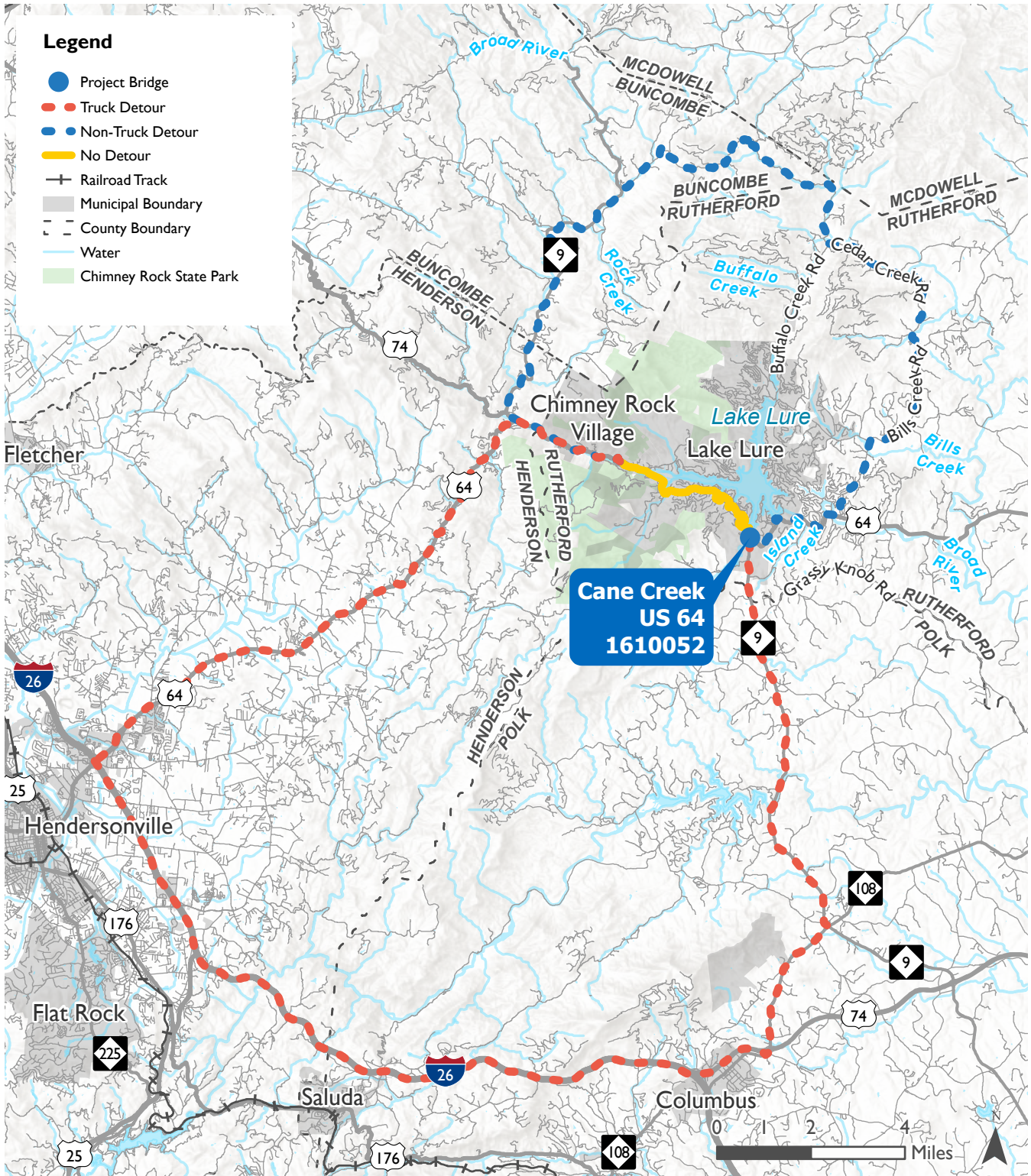
Project Location Map

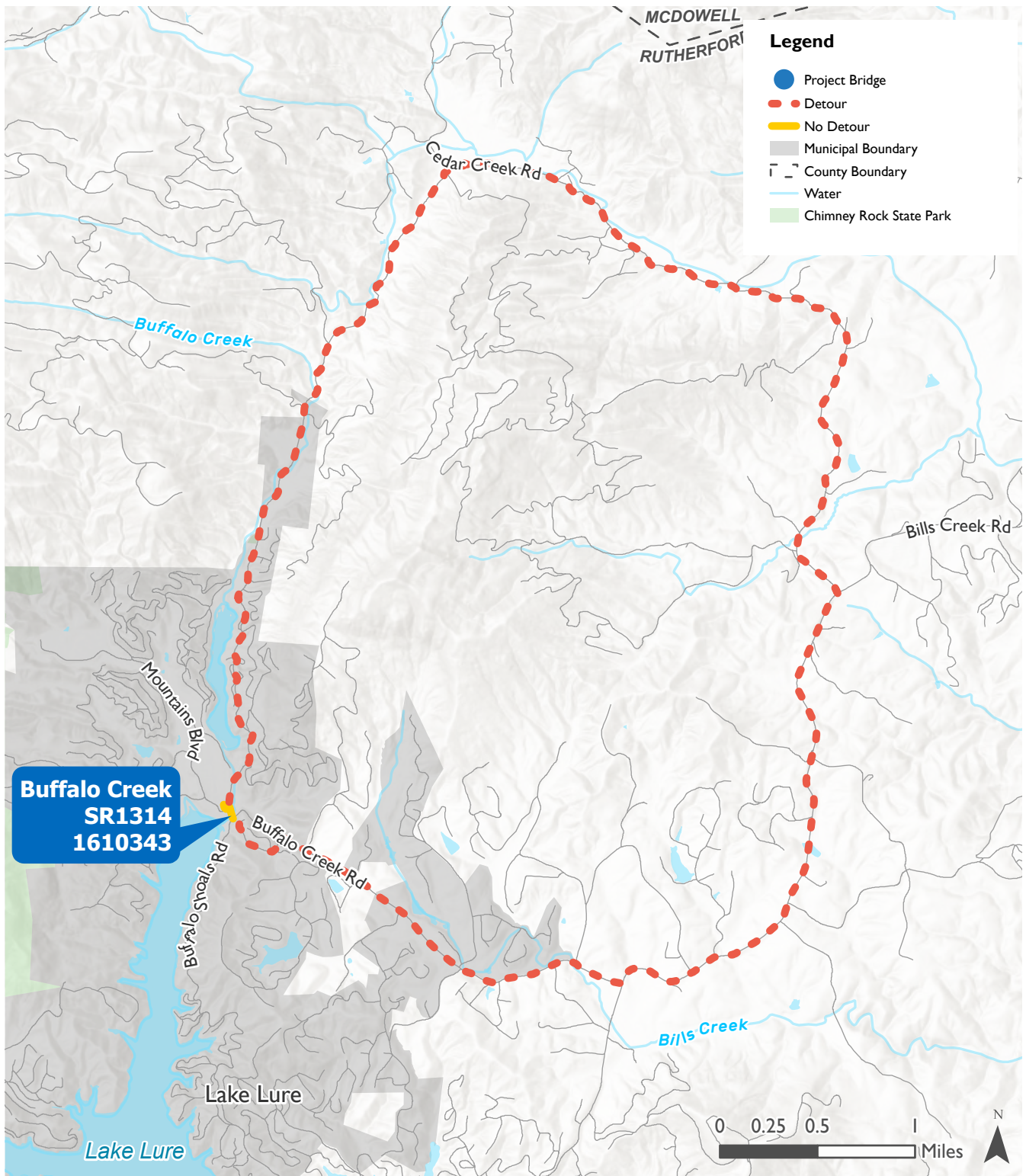




Safety and Mobility

Detour Routes





Category	Cane Creek Bridge			Buffalo Creek Bridge	
Conditions	Normal	Veh. Detour	Truck Detour	Normal	Detour
Distance (miles)	4.6	24.9	46.2	0.1	12.9
Time (minutes)	11	59	59	1	45

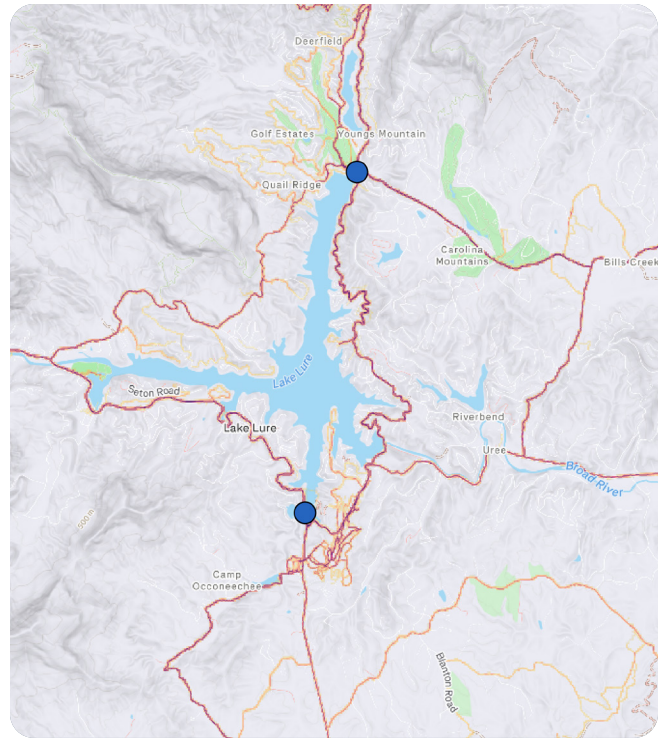
Detours required for closure or failure of Project Bridges

Person Miles Traveled

Category	Cane Creek Bridge	Buffalo Creek Bridge	Combined
Auto PMT	20,277	213	20,490
Truck PMT	336	0	336
Total PMT	20,613	213	20,825

Daily PMT for each mode were calculated by multiplying total truck and auto AADT by the occupancy factors found in USDOT's BCA guidance and the distance between Chimney Rock Village to NC 9 for Bridge 52 and the distance between Buffalo Shoals Rd to Mountains Blvd for Bridge 343.

Bicycle and Pedestrian Safety

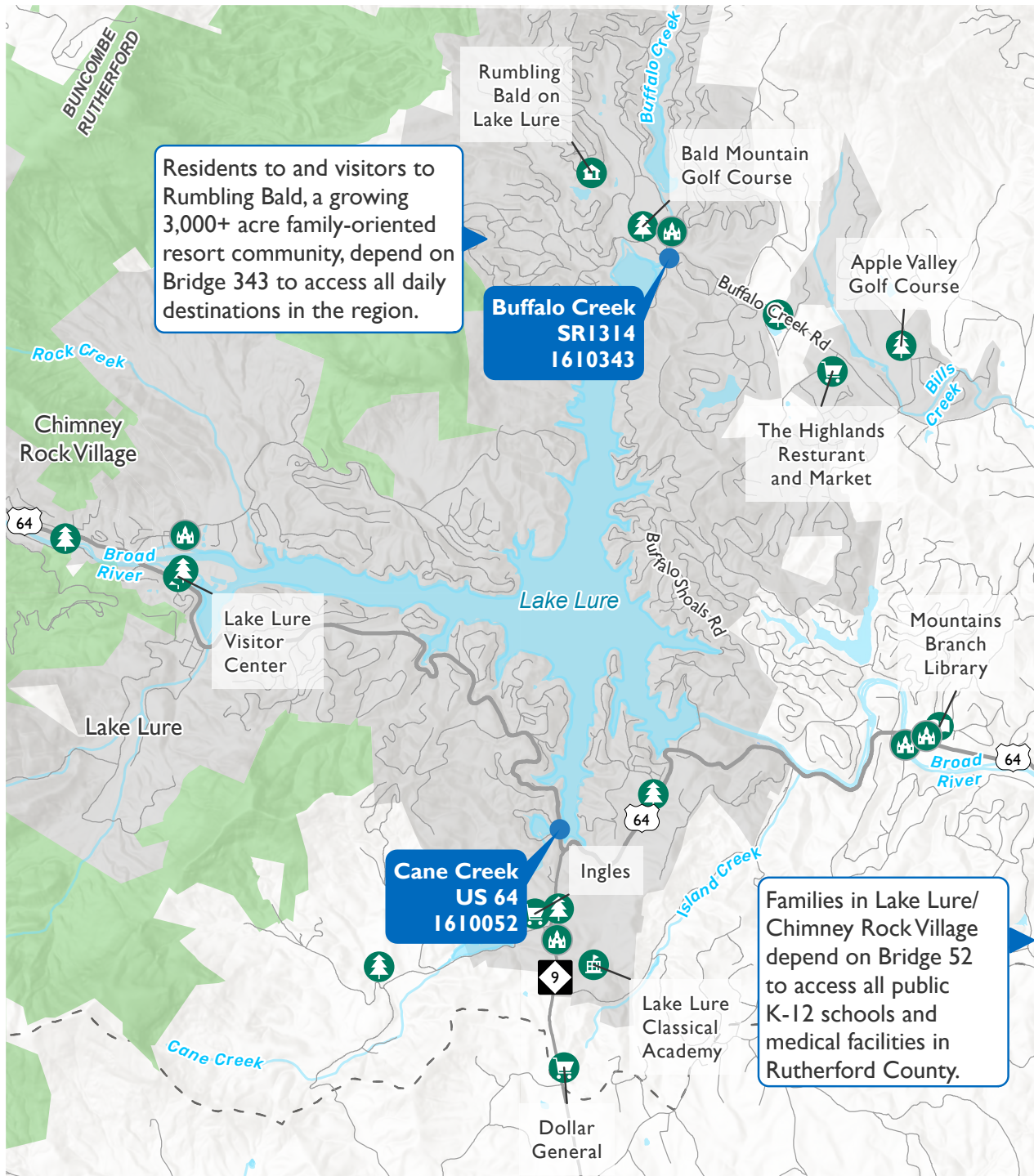


This heat map from Strava shows the concentration of bicycle and pedestrian activity near the Project Bridges, demonstrating strong demand for active transportation throughout the corridor and highlighting the importance of future proofing Lake Lure STRONG's Bridges for future bicycle and pedestrian accommodations



Quality of Life

Daily Destinations



Legend

- Project Bridge
- Grocery
- Library
- Camping, Golf, Park
- Place of Worship
- School
- Residential
- Municipal Boundary
- County Boundary
- Water
- Chimney Rock State Park



**BIP FY 2026
GRANT APPLICATION
June 2026**

LAKE LURE STRONG

(**S**afe **T**ransportation for **R**egional
Opportunity and **N**eighborhood **G**ood repair)



N.C. Department of Transportation
1 South Wilmington Street
Raleigh, NC 27601
ncdot.gov

STAY CONNECTED



/ncdot



@ncdotcom



@ncdot



NCDOTcommunications